

## JANUARY

### Recruiting Calendars

#### Men's Basketball

Evaluation Period:  
Oct. 6, 2008-March 31, 2009

#### Women's Basketball

Evaluation Period:  
Sept 16, 2008 - April 21, 2009  
(shall not exceed 100 days of  
off-campus recruiting)

#### Women's Softball

Contact Period:  
January 2, 2009 - July 31, 2009

Dead Period:  
April 6-9, 2009

#### Baseball

Quiet Period:  
Nov. 14, 2008-Feb. 28, 2009

#### **EXCEPT FOR**

Dead Period: Jan. 2-6, 2009

#### Women's Volleyball

Contact Period:  
January 1, 2009 - July 31, 2009

#### **EXCEPT FOR**

Quiet Period:  
January 1-16, 2009

#### Women's Lacrosse

Contact Period:  
January 2, 2009 - May 21, 2009

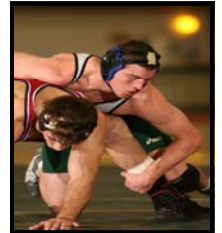


# COMPLIANCE CORNER



JANUARY 2009

## *RECRUITING*



### 13.1.6 Contacts

#### 13.1.6.1 Sports Other Than Football and Basketball

In sports other than football and basketball, each institution is limited to seven recruiting opportunities (contacts and evaluations combined) per prospective student-athlete. During the senior year of high school, not more than three of seven opportunities may be off-campus contacts at any site and shall **not** include contacts made during an official visit per.

#### 13.1.6.3 Men's Basketball

In men's basketball, during the academic year, each institution shall be limited to seven recruiting opportunities (contacts and evaluations combined) per prospective student-athlete; however, during the prospective student-athlete's senior year, the institution is limited to not more than three in-person, off-campus contacts (see Bylaw 13.1.6.6). Men's basketball staff members shall not exceed 130 recruiting-person days during the academic year contact and evaluation periods.

#### 13.1.6.4 Women's Basketball

In women's basketball, during the academic year, each institution shall be limited to five recruiting opportunities (contacts and evaluations combined) per prospective student-athlete; however, during the prospective student-athlete's senior year, the institution is limited to not more than three in-person, off-campus contacts (see Bylaw 13.1.6.6). Women's basketball staff members shall not exceed 100 recruiting-person days during the academic year contact and evaluation periods.

#### 13.1.6.5 Counting Contacts and Evaluations

Evaluations that occur during the academic year count against the permissible number of recruiting opportunities. Outside of the academic year, evaluations do not count against the annual number of recruiting opportunities. Contacts that occur with a prospective student-athlete count against the permissible number of total recruiting opportunities regardless of the time period (e.g., academic year or outside the academic year). All contacts and evaluations are subject to recruiting calendar restrictions.

Recruiting Calendar  
(cont'd)

Cross Country/Track and Field

Contact Period:  
January 3, 2009 - July 31, 2009

**EXCEPT FOR**

Dead Period:  
February 2 - 5, 2009

Other Sports

Contact Period:  
January 1, 2009 - July 31, 2009

Definition

(Bylaw 13.02.4.3)

**Quiet Period.** A quiet period is a period of time when it is permissible to make in-person recruiting contacts only on the institution's campus. **No in-person, off campus recruiting contacts or evaluations may be made during the quiet period.**

**Dead Period.** A dead period is a period of time when it is not permissible to make in-person recruiting contacts or evaluations on or off the institution's campus or to permit official or unofficial visits by prospective student-athletes to the institution's campus. The provision of complimentary admissions to a prospective student-athlete during a dead period is prohibited, except as provided by Bylaw 13.7.2.5. During the dead period, a coaching staff member may not serve as a speaker, attend a meeting or banquet at which a prospective student-athletes are in attendance and may not visit a prospective student-athletes institution. It remains permissible however, for an institutional staff member to write or telephone a prospective-student athlete.

## ELIGIBILITY

### 15.5.11 Squad List

#### 15.5.11.1 Eligibility Requirement

To be eligible to represent an institution in intercollegiate athletics competition, a student-athlete shall be included on the institution's squad list form.

##### 15.5.11.3.1 Exception-14 Day Grace Period

An institution is not required to place a student-athlete who is "trying out" for a team on the squad list form for 14 days from the first date the student engages in countable athletically related activities or until the institution's first competition, whichever occurs earlier.

## AWARDS AND BENEFITS



### 16.7 Team Entertainment

#### 16.7.1 Away-from-Home Contests and Vacation Periods

The institution may pay the actual costs (but may not provide cash) for reasonable entertainment that takes place within a 100-mile radius of where a team plays or practices in connection with an away-from-home contest or en route to or from such a contest. In addition, an institution may pay the actual costs (but may not provide cash) for reasonable entertainment that takes place within a 30-mile radius of the institution's campus or practice site during vacation periods when the team is required to reside on campus (or at a practice site normally used by the institution) and classes are not in session.

##### 16.7.1.1 Professional Sports Tickets

Complimentary tickets to professional sports contests shall not be provided to student-athletes, unless the tickets are provided by the institution (or by a representative of athletics interests through the institution) for entertainment purposes to student-athletes involved in an away-from-home contest. Under the latter circumstances, the institution may pay actual costs for reasonable entertainment that takes place during a team trip.

##### 16.7.2 Movies in Conjunction with a Home Contest

The institution may rent a film or movie, provide pay-per-view movies in the student-athletes' hotel rooms or take its intercollegiate team to the movies the night before a home contest without the film or movie being considered an extra benefit.